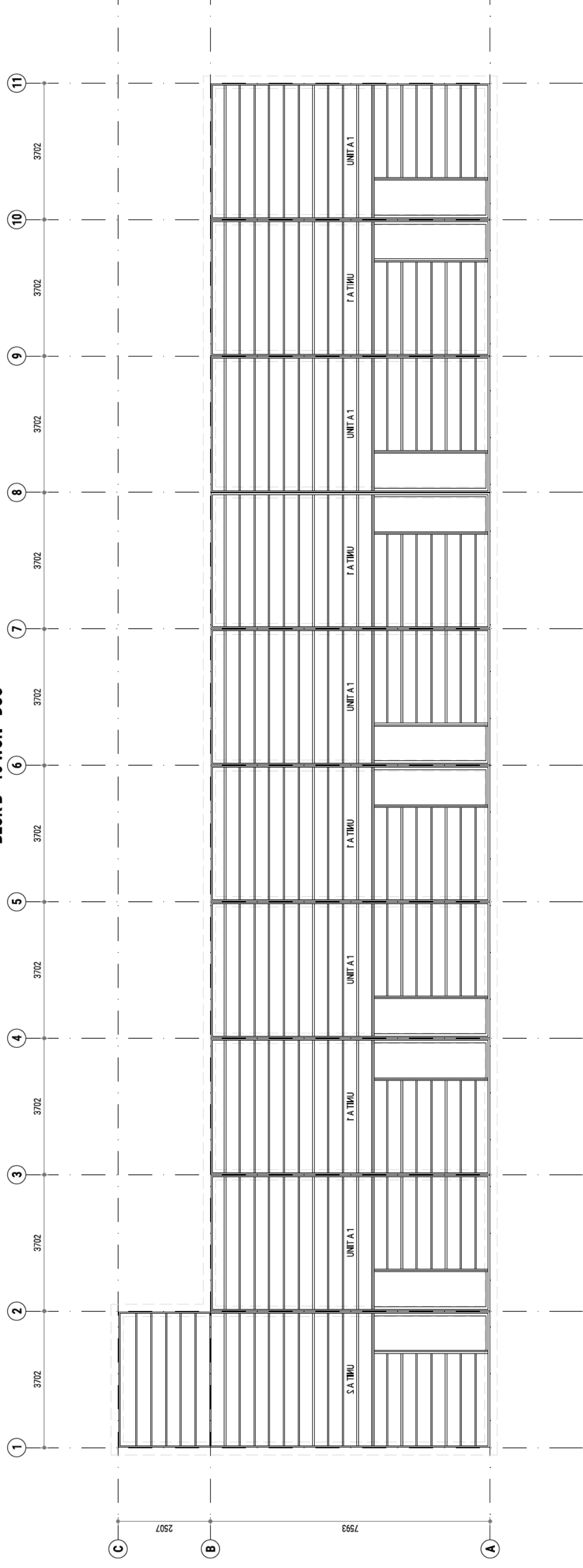


BLOK B - 10 WON - DUO

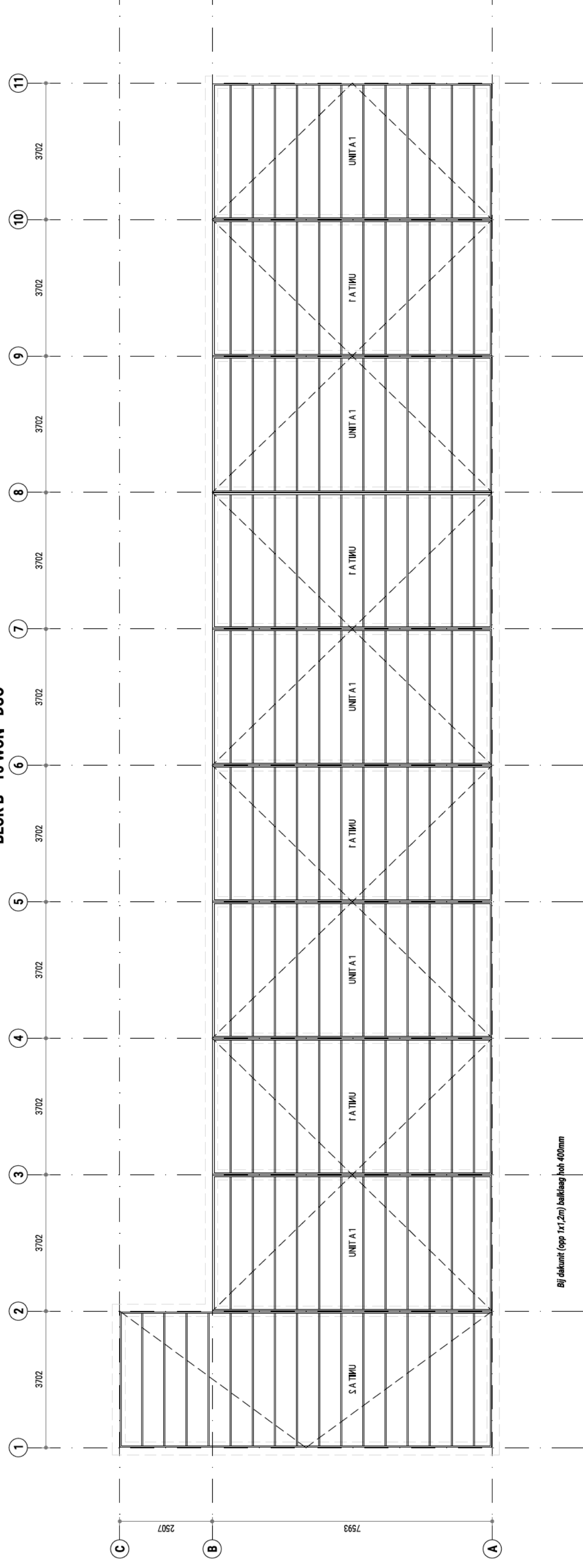


UNIT - VV - VLOER

SCHAAL 1:100

-> Voor units de omcichting units

BLOK B - 10 WON - DUO



UNIT - W - DAK

SCHAAL 1:100

-> Voor units de omcichting units

UNITS

- (Regime grond) - Lijger
 - UHF200 (ovonden)
 - C-150/40x40
 - Standaard 400
- (Plooi)
 - Balklsg - 30x120x40mm
 - Standaard - 11mm OSB
- (Vloer)
 - Balklsg - 30x25x40mm
 - Standaard - 18mm OSB
- (Hofwand dak) - Balklsg - 30x25x40mm
- Standaard - 18mm OSB
- Zonnepanelen 350x70

HIJSEN

- UHF vloer om Nijhuisd in voor naar ondergrond
- aan de aangrenzende parkeer
- UHF vloer om een evenaar
- waartoe er geen substructie in dak ontstaat

RENVOOI

- (RIS)
 - Balken - 11mm OSB
 - 30x25x40mm
 - 12,5mm Ferraal
 - 30x30
 - 40x95x400mm
 - 12,5mm Ferraal
 - 12,5mm Ferraal
 - Niet oevergevoerd blokje vijver opentien
 - Niet oevergevoerd blokje vijver opentien
- (Stalder)
 - 100x100x100 blokjes op vijfvering
 - 20m blokjes
 - Stalder opentien in voor en achtergrond

**MAATVOERING CF. ARCHITECT
GELUID CF. ADVISEUR
BRAND CF. ADVISEUR**

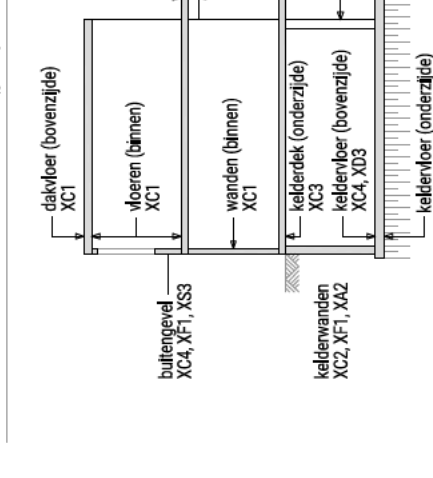
STEENCONSTRUCTIES

Kalkzandsteen C312 Rb = 12 N/m²
Baksteen Rb = 15 N/m²
Petro Rb = 15 N/m²

Stalder/massieven koppelen aan bouwmuren volgens opgave leverancier
In muren met metalen koppelen van hoofdopbouw, dakranden conform opgave leverancier
In muren met metalen koppelen van hoofdopbouw, dakranden conform opgave leverancier

BETONCONSTRUCTIES

C32/35
Mikado
Betonstaal B 500 (geel)



| Materiaal | XC1 | XC2 | XC3 | XC4 | XC5 | XC6 | XC7 | XC8 | XC9 | XC10 | XC11 | XC12 | XC13 | XC14 | XC15 | XC16 | XC17 | XC18 | XC19 | XC20 | XC21 | XC22 | XC23 | XC24 | XC25 | XC26 | XC27 | XC28 | XC29 | XC30 | XC31 | XC32 | XC33 | XC34 | XC35 | XC36 | XC37 | XC38 | XC39 | XC40 | XC41 | XC42 | XC43 | XC44 | XC45 | XC46 | XC47 | XC48 | XC49 | XC50 | XC51 | XC52 | XC53 | XC54 | XC55 | XC56 | XC57 | XC58 | XC59 | XC60 | XC61 | XC62 | XC63 | XC64 | XC65 | XC66 | XC67 | XC68 | XC69 | XC70 | XC71 | XC72 | XC73 | XC74 | XC75 | XC76 | XC77 | XC78 | XC79 | XC80 | XC81 | XC82 | XC83 | XC84 | XC85 | XC86 | XC87 | XC88 | XC89 | XC90 | XC91 | XC92 | XC93 | XC94 | XC95 | XC96 | XC97 | XC98 | XC99 | XC100 | | | | | | | | | | | | | | | | | | | | | | | | | | | | | | | | | | | | | | | | | | | | | | | | | | | | | | | | | | | | | | | | | | | | | | | | | | | | | | | | | | | | | | | | | | | | | | | | | |
|-----------|-----|-----|-----|-----|-----|-----|-----|-----|-----|------|------|------|------|------|------|------|------|------|------|------|------|------|------|------|------|------|------|------|------|------|------|------|------|------|------|------|------|------|------|------|------|------|------|------|------|------|------|------|------|------|------|------|------|------|------|------|------|------|------|------|------|------|------|------|------|------|------|------|------|------|------|------|------|------|------|------|------|------|------|------|------|------|------|------|------|------|------|------|------|------|------|------|------|------|------|------|------|------|------|-------|-----|-----|-----|-----|-----|-----|-----|-----|-----|-----|-----|-----|-----|-----|-----|-----|-----|-----|-----|-----|-----|-----|-----|-----|-----|-----|-----|-----|-----|-----|-----|-----|-----|-----|-----|-----|-----|-----|-----|-----|-----|-----|-----|-----|-----|-----|-----|-----|-----|-----|-----|-----|-----|-----|-----|-----|-----|-----|-----|-----|-----|-----|-----|-----|-----|-----|-----|-----|-----|-----|-----|-----|-----|-----|-----|-----|-----|-----|-----|-----|-----|-----|-----|-----|-----|-----|-----|-----|-----|-----|-----|-----|-----|-----|-----|-----|------|
| Hoofdwand | 15 | 25 | 30 | 35 | 40 | 45 | 50 | 55 | 60 | 65 | 70 | 75 | 80 | 85 | 90 | 95 | 100 | 105 | 110 | 115 | 120 | 125 | 130 | 135 | 140 | 145 | 150 | 155 | 160 | 165 | 170 | 175 | 180 | 185 | 190 | 195 | 200 | 205 | 210 | 215 | 220 | 225 | 230 | 235 | 240 | 245 | 250 | 255 | 260 | 265 | 270 | 275 | 280 | 285 | 290 | 295 | 300 | 305 | 310 | 315 | 320 | 325 | 330 | 335 | 340 | 345 | 350 | 355 | 360 | 365 | 370 | 375 | 380 | 385 | 390 | 395 | 400 | 405 | 410 | 415 | 420 | 425 | 430 | 435 | 440 | 445 | 450 | 455 | 460 | 465 | 470 | 475 | 480 | 485 | 490 | 495 | 500 | 505 | 510 | 515 | 520 | 525 | 530 | 535 | 540 | 545 | 550 | 555 | 560 | 565 | 570 | 575 | 580 | 585 | 590 | 595 | 600 | 605 | 610 | 615 | 620 | 625 | 630 | 635 | 640 | 645 | 650 | 655 | 660 | 665 | 670 | 675 | 680 | 685 | 690 | 695 | 700 | 705 | 710 | 715 | 720 | 725 | 730 | 735 | 740 | 745 | 750 | 755 | 760 | 765 | 770 | 775 | 780 | 785 | 790 | 795 | 800 | 805 | 810 | 815 | 820 | 825 | 830 | 835 | 840 | 845 | 850 | 855 | 860 | 865 | 870 | 875 | 880 | 885 | 890 | 895 | 900 | 905 | 910 | 915 | 920 | 925 | 930 | 935 | 940 | 945 | 950 | 955 | 960 | 965 | 970 | 975 | 980 | 985 | 990 | 995 | 1000 |

HOUTCONSTRUCTIES

150x150
150x200
150x300
150x400
150x500
150x600
150x700
150x800
150x900
150x1000

STAALCONSTRUCTIES

Beekhof 150mm
Rijssen 150mm
Rijssen 200mm
Rijssen 250mm
Rijssen 300mm
Rijssen 350mm
Rijssen 400mm
Rijssen 450mm
Rijssen 500mm
Rijssen 550mm
Rijssen 600mm
Rijssen 650mm
Rijssen 700mm
Rijssen 750mm
Rijssen 800mm
Rijssen 850mm
Rijssen 900mm
Rijssen 950mm
Rijssen 1000mm

VERBAE A

26-04-2024



46 won. a/d Pieter de Hoochpl, te Alblasserdam
"Type: Duo - 10 - Blok B"

Constructietekening
Unit - vv

Opdrachtgever: Windkracht 10
Burg. de Bruijnlaan 97, 3330 AE Zwijndrecht

Ontwerp: Beril
Postbus 43, 5400 AA Uden

Werknummer: 524000 - 8
Bladnummer: CT13

Tekenaar: Constructeur
Formaat: A1
Schaal: 1:100
Status: .
LOD-fase: .